

ALTAIR[®] 4XR Multigas Detector



Real-time. Rugged. Reliable.

*Because every life has a **purpose...***

SAFETY AT THE *SPEED OF NOW*



BE SAFER

With rapid-response sensors.

- LEL
- CO
- O₂
- SO₂
- H₂S
- NO₂

POWERED BY
XCell[®]
SENSORS



2X FASTER

**THAN INDUSTRY
AVERAGE**

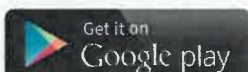
WORK SMARTER

With the **ALTAIR Connect** app.

- Update detector settings
- Email calibration details
- Create notification groups
- Get compliance reminders



ALTAIR[®] Connect

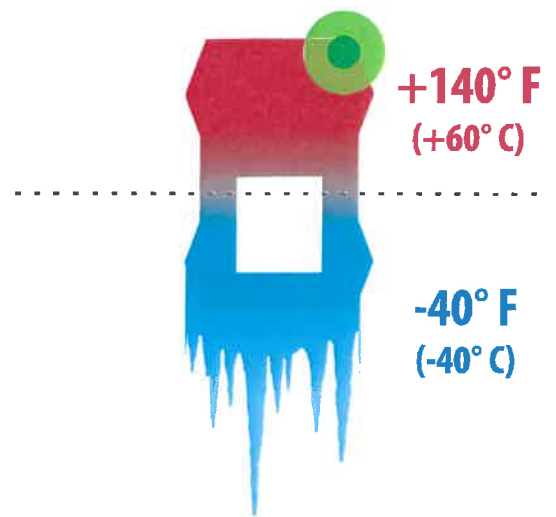
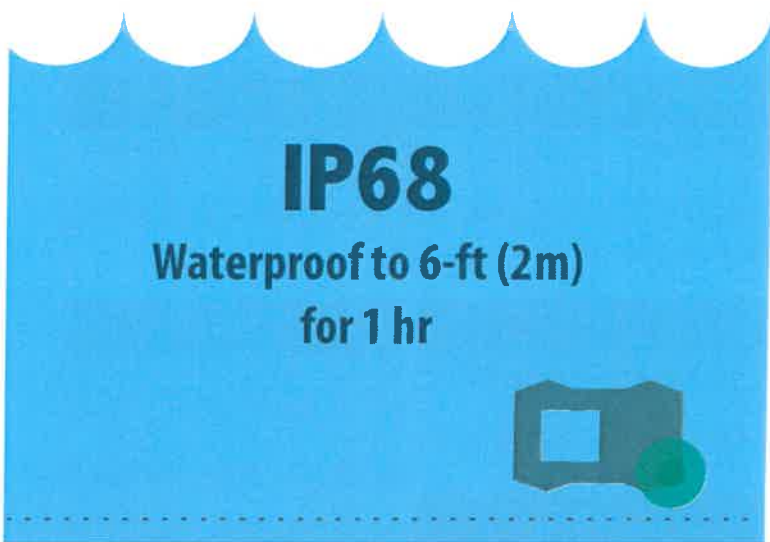
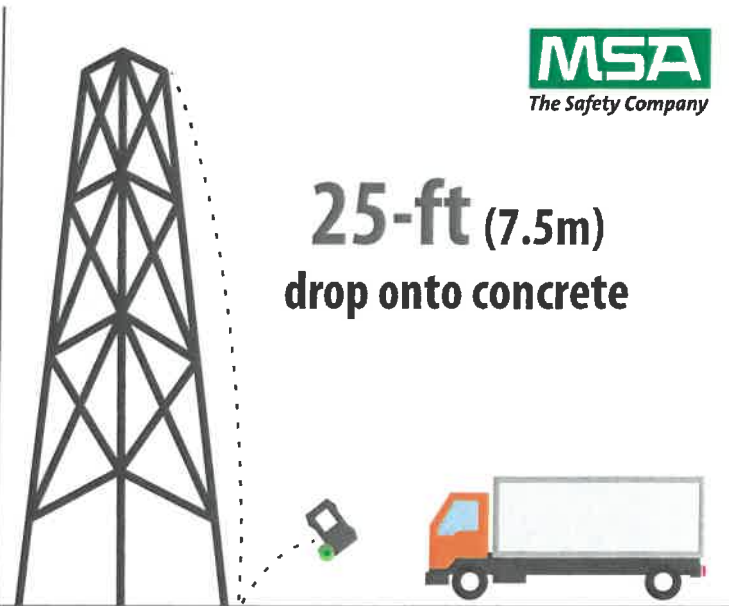


STAY CONNECTED

With alerts from the field.

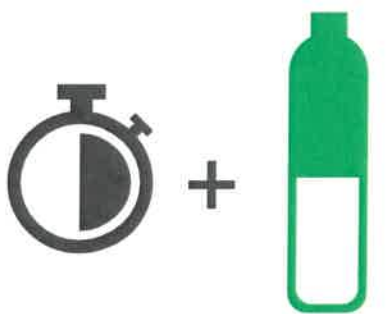
- Live gas readings
- InstantAlert™ distress calls
- MotionAlert™ man-down alarms
- Non-compliance warnings





BUILT TO WORK WHEREVER YOU WORK

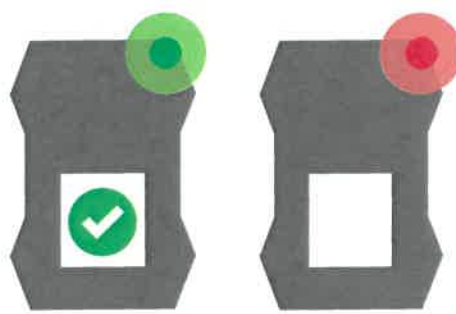
FAST, EFFICIENT MAINTENANCE



1/2 Time

1/2 Test Gas

COMPLIANCE AT A GLANCE



Bumped

Not Bumped

GUARANTEED PERFORMANCE



Instrument & Sensor Warranty

Specifications & Order Information

Specification	Description		
GAS TYPES	Gas	Range	Resolution
	LEL	0-100%	1%
	O ₂	0-30%	0.1%
	CO	0-1999 ppm	1 ppm
	H ₂ S	0-200 ppm	1 ppm
	H ₂ S-LC	0-100 ppm	0.1 ppm
	SO ₂	0-20 ppm	0.1 ppm
	NO ₂	0-50 ppm	0.1 ppm
WARRANTY	4 years (+ optional 1-year extension)		
DURABILITY	25-foot (7.5 m) drop protection MIL-STD-810G drop protection Certified IP68 rating		
TEMPERATURE RANGE	-40°F to +140°F -40°C to +60°C		
RELATIVE HUMIDITY	5% - 95% intermittent 15% - 90% non-condensing		
POWER	Rechargeable Li-polymer battery 24-hour run-time < 4 hour charge time		
PHYSICAL	4.4" x 3.0" x 1.4" 11 cm x 7.6 cm x 3.5 cm 8 oz (228 g)		
DATALOGGING	> 50 hours (adjustable) > 500 event logs		

ALTAIR 4XR Gas Detector Part Numbers			
Configuration	Case Color	USA/CAN	ATEX
LEL, O ₂ , CO, H ₂ S	Charcoal	10178557	10178573
LEL, O ₂ , CO, H ₂ S	Phosphorescent	10178558	10178569

Need something different? Contact MSA for options.

Kits with ALTAIR 4XR (LEL, O ₂ , CO, H ₂ S & Charcoal Case)	USA/CAN
34-liter gas cylinder (1.45% CH ₄ , 15% O ₂ , 60 ppm CO, 20 ppm H ₂ S) Regulator (0.25 l/min)	10178356
ALTAIR Pump Probe 34-liter gas cylinder (1.45% CH ₄ , 15% O ₂ , 60 ppm CO, 20 ppm H ₂ S) Regulator (0.25 l/min)	10178357

MSA GALAXY® GX2 Automated 4XR Test Stands for 1 Gas Cylinder				
Integrated 4XR Charger	N. America	Europe	UK	Australia
Yes	10128630	10128639	10128659	10128669
No	10128642	10128651	10128661	10128671

Need to accommodate multiple cylinders? Contact MSA for options.

Calibration Gas		XCell Sensor Replacement Kits	
1.45% CH₄, 15% O₂, 60 ppm CO, 20 ppm H₂S		EX Combustible	10106722
34-liter cylinder	10048280	O ₂	10106729
58-liter cylinder	10045035	CO/H ₂ S	10106725
		CO/H ₂ S-LC	10121213
		CO-H ₂ /H ₂ S	10121214
		SO ₂ /H ₂ S-LC	10121215
		CO/NO ₂	10121217
ALTAIR Pump Probe with charger			
For USA/Canada	10152669		
For ATEX/IEC	10052668		

Don't need a charger? Contact MSA for options.

Certifications		
North America USA Class I, Division 1, Groups A, B, C & D Class II, Division 1, Groups E, F & G Class III, Division 1 Ambient temperature: -40°C to +60°C; T4 Canada CSA CAN/CSA C22.2 No. 152 Combustible Gas Detection Instruments C22.2 No. 152 Performance Ambient Temperature: -20°C to +54°C; T4 C22.2 No. 157 Intrinsic Safety Ambient Temperature: -40°C to +54°C; T4	Europe Directive 2014/34/EU (ATEX): II 1G Ex ia da IIC T4 Ga, -40°C to +60°C, IP68 CE 0080 Directive 2014/30/EU (EMC): EN50270 Type 2, EN61000-6-3	IEC IECEx Ex ia da IIC T4 Ga, -40°C to +60°C, IP68

Note: This Bulletin contains only a general description of the products shown. While uses and performance capabilities are described, under no circumstances shall the products be used by untrained or unqualified individuals and not until the product instructions including any warnings or cautions provided have been thoroughly read and understood. Only they contain the complete and detailed information concerning proper use and care of these products.



MSA – The Safety Company
 1000 Cranberry Woods Drive
 Cranberry Township, PA 16066 USA
 Phone 724-776-8600
www.MSAafety.com
U.S. Customer Service Center
 Phone 1-800-MSA-2222
 Fax 1-800-967-0398

MSA Canada
 Phone 1-800-672-2222
 Fax 1-800-967-0398
MSA Mexico
 Phone 01 800 672 7222